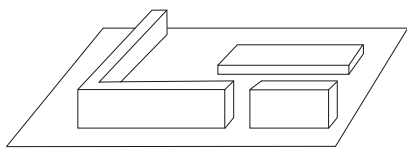


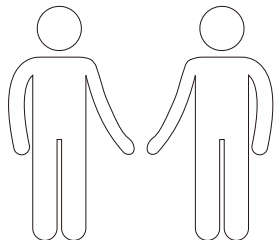
Specifications

Max. Weight Capacity	100 kg
Max. Speed	10mm/s
Height Adjustment	730-1200mm
Desktop Size	E1Q-1407-EU: 1400x700x16mm
	E1Q-1607-EU: 1600x700x16mm
	E1Q-1808-EU: 1800x800x16mm

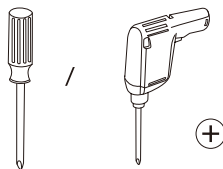
Installation Instructions



Place on carpet to avoid scratching



Two or more individuals need to collaborate



Drill required (not supplied)

Accessories Package

Attention: The illustrations below are for guidance only and may vary slightly from the actual product. Please contact Customer Service if any parts are missing or if you have any problems during assembly.

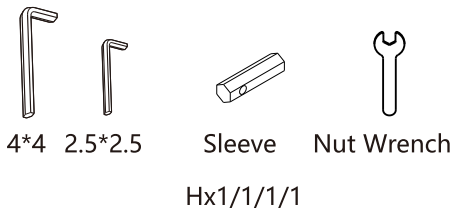
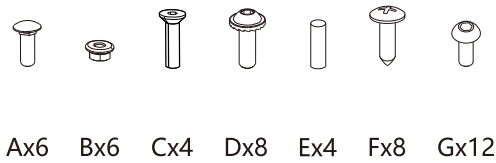
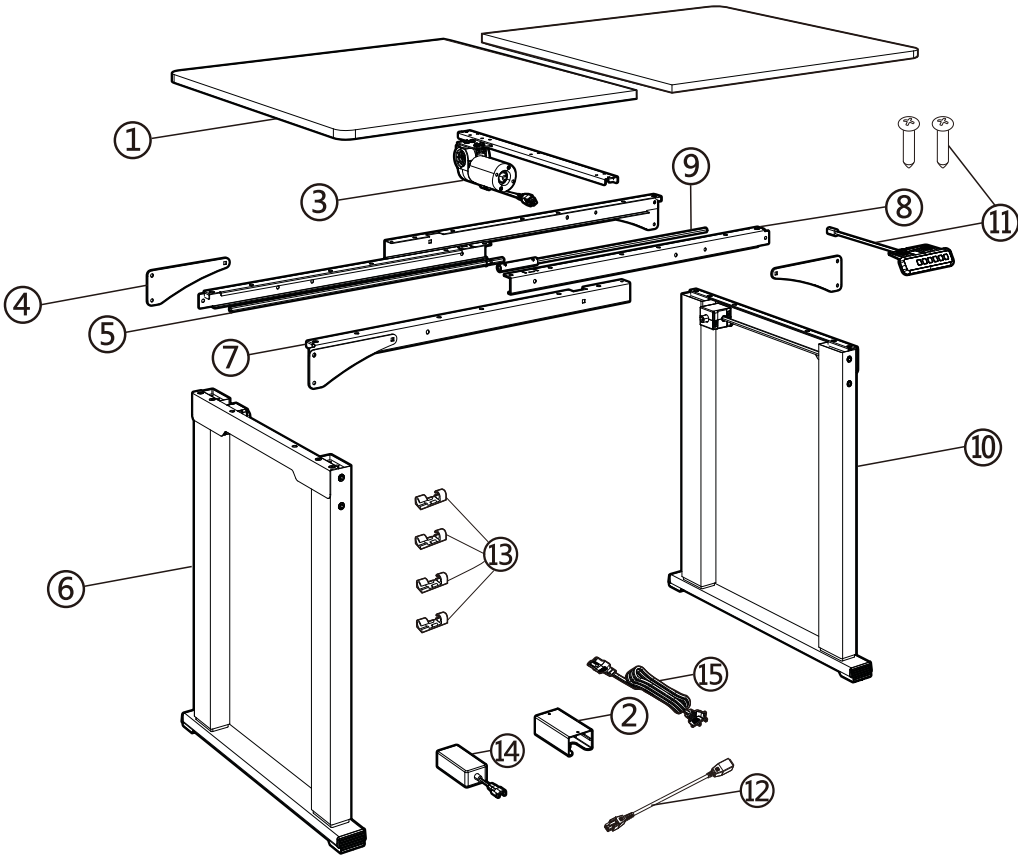
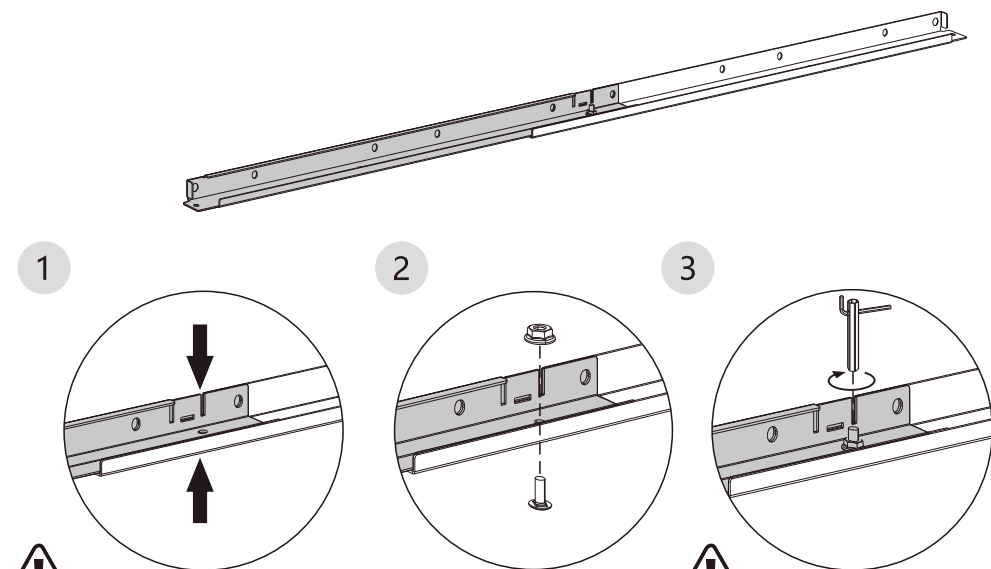
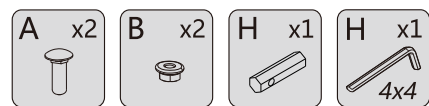


Diagram of Components

No.	Parts	No.	Parts
①	Splicing tabletop x2	⑨	Drive rod (Coupling) x1 Short rod
②	Adapter mounting bracket x1	⑩	Right column frame x1
③	Motor x1	⑪	Keypad x1
④	Triangular connecting plate x4	⑫	Extension cord x1
⑤	Drive rod (retaining ring) x1 Long rod	⑬	Cable Clip x4
⑥	Left column frame x1	⑭	Adapter x1
⑦	Outer beam x2	⑮	Power Cord x1
⑧	Inside beam x2		



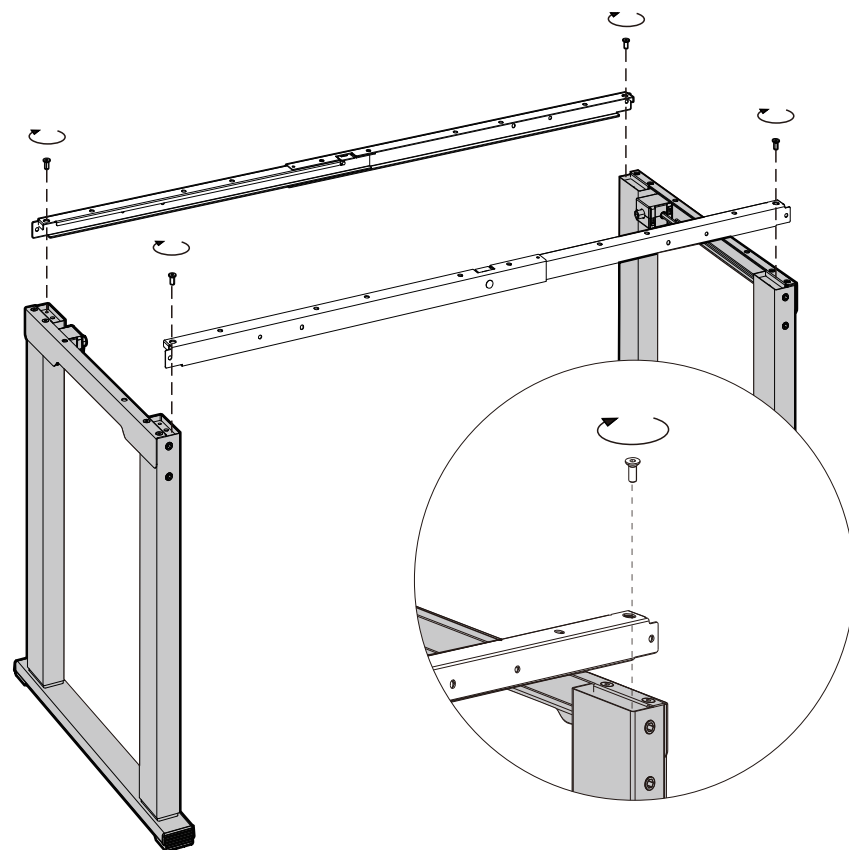
## 01 Connect the inside and outer beams x2



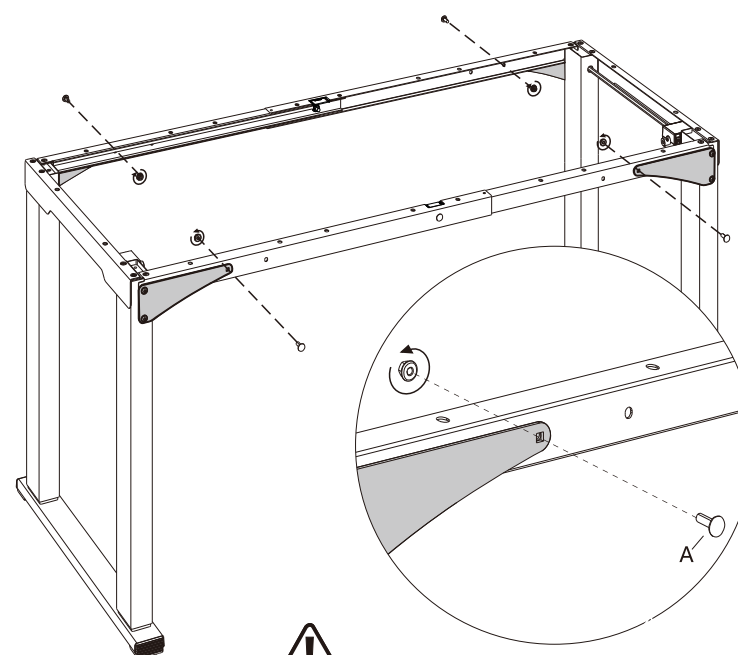
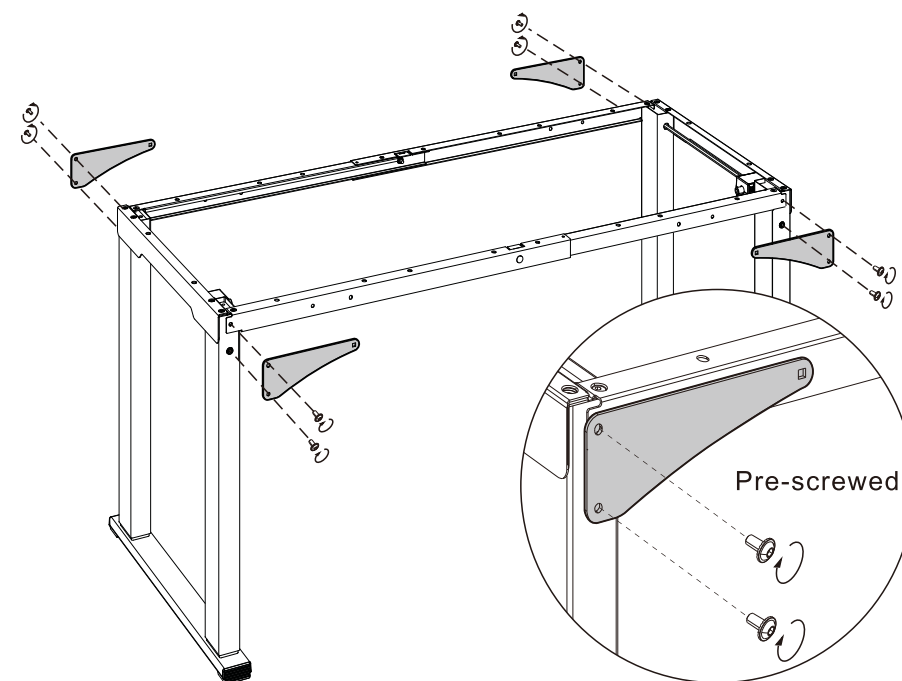
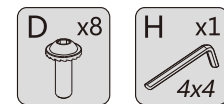
Note: The holes between the crossbeam plates need to be overlapped.

Note: When installing the nut, hold the screw by hand.

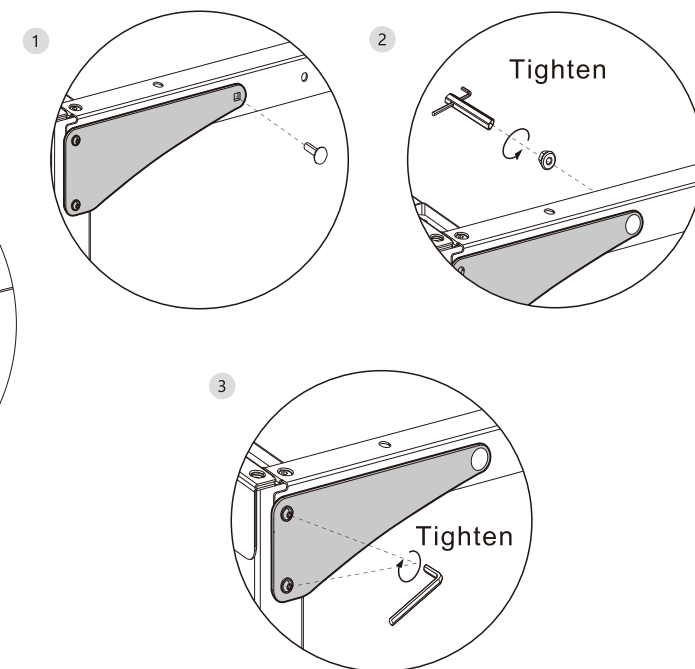
## 02 Install column frames and beams x2



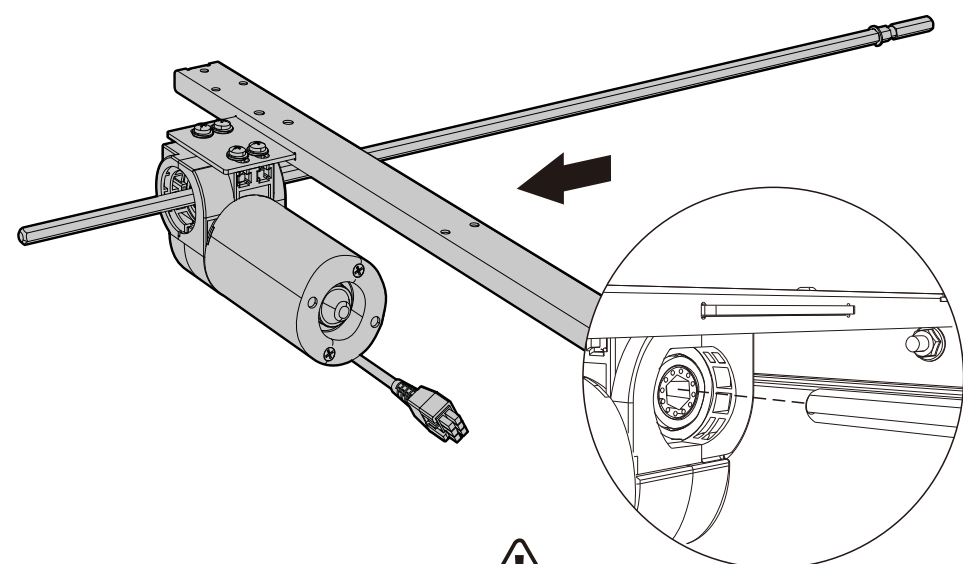
## 03 Install the triangular connecting plate



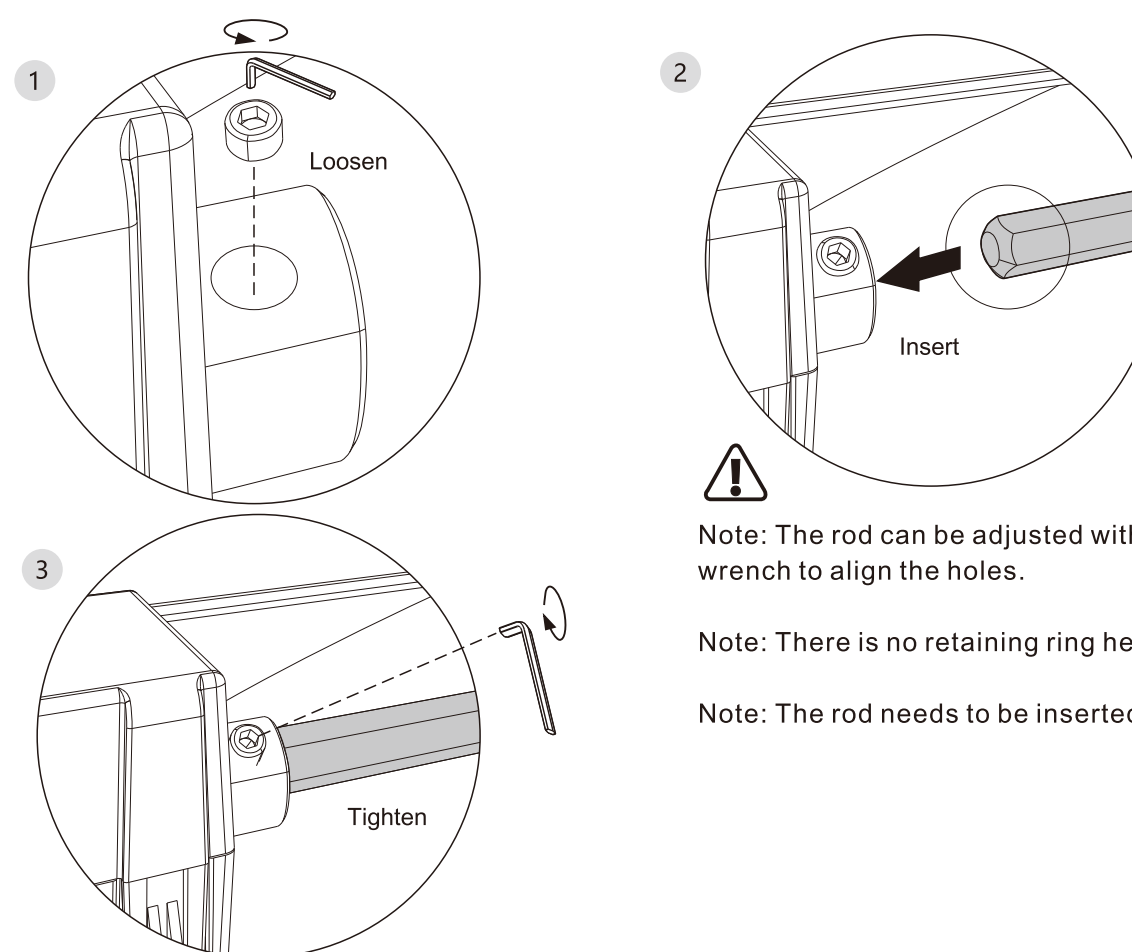
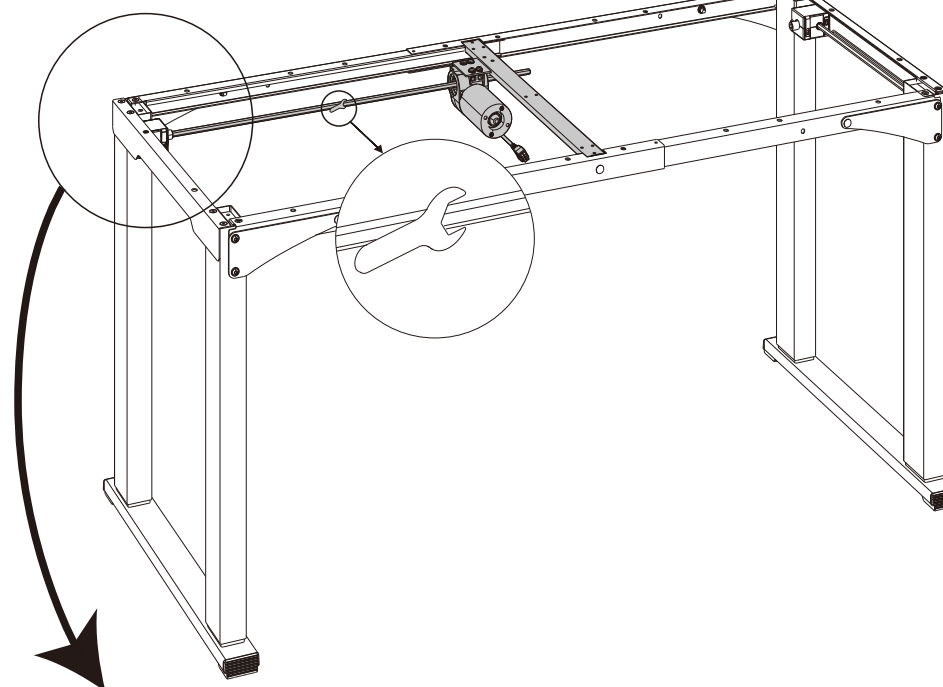
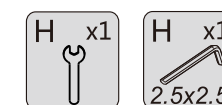
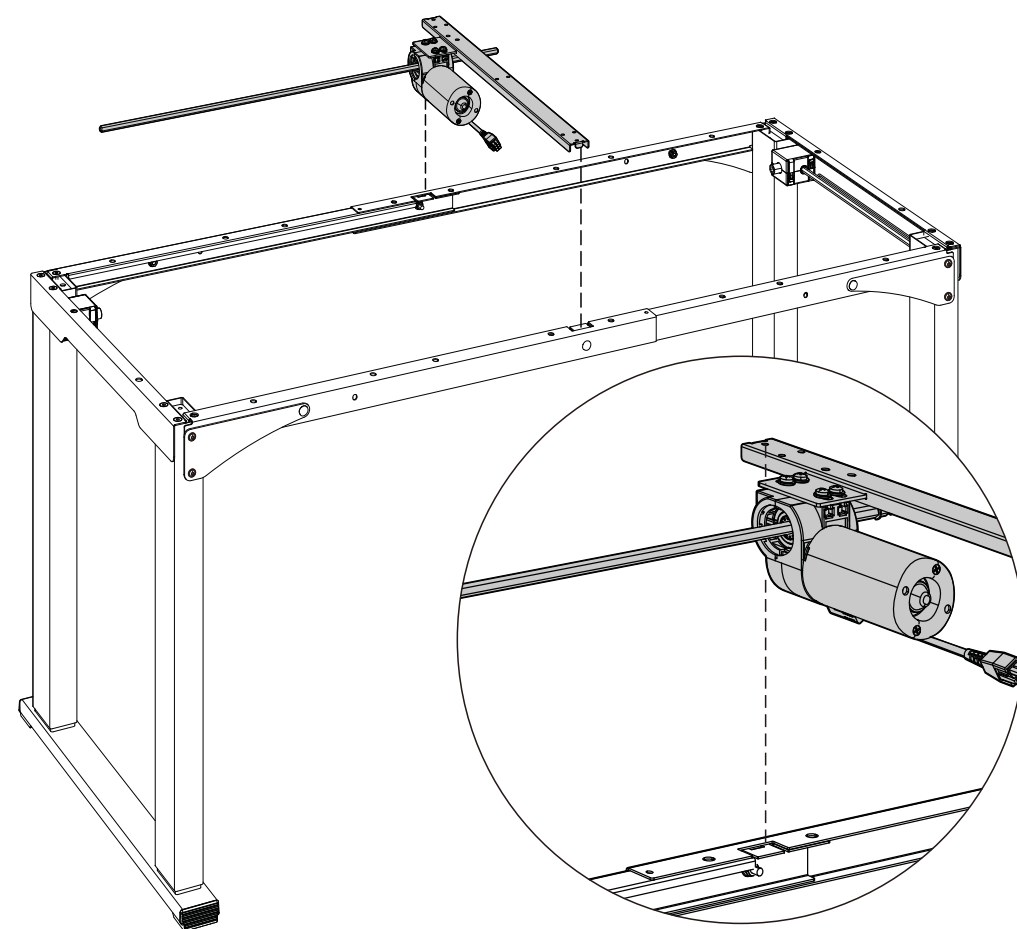
Note: Screw (A) is inserted from the outside of the square hole.



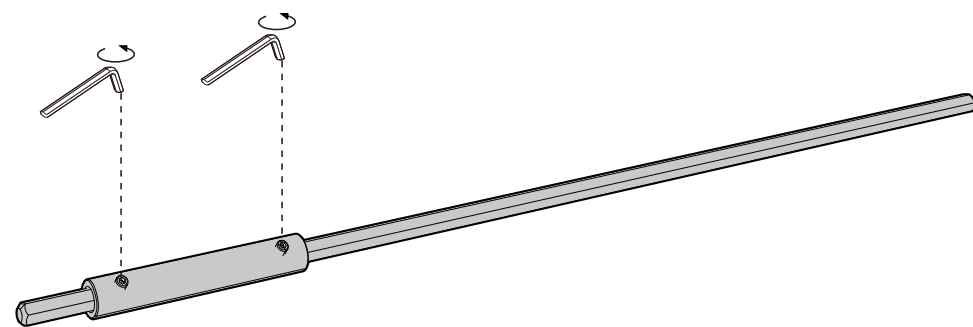
## 04 Install the drive rod and motor



**!**  
Note: Please align the mounting holes.



**!**  
Note: The rod can be adjusted with a wrench to align the holes.  
Note: There is no retaining ring here.  
Note: The rod needs to be inserted fully.



H x1  
2.5x2.5

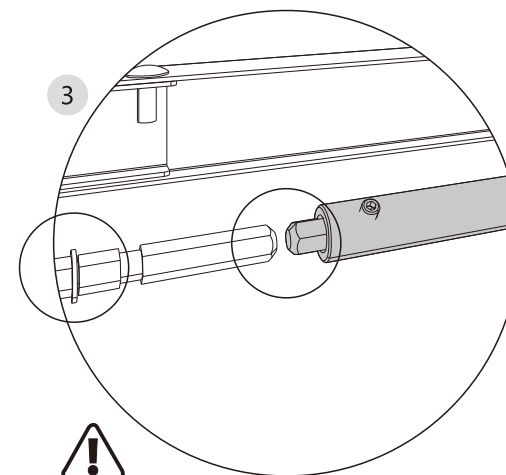
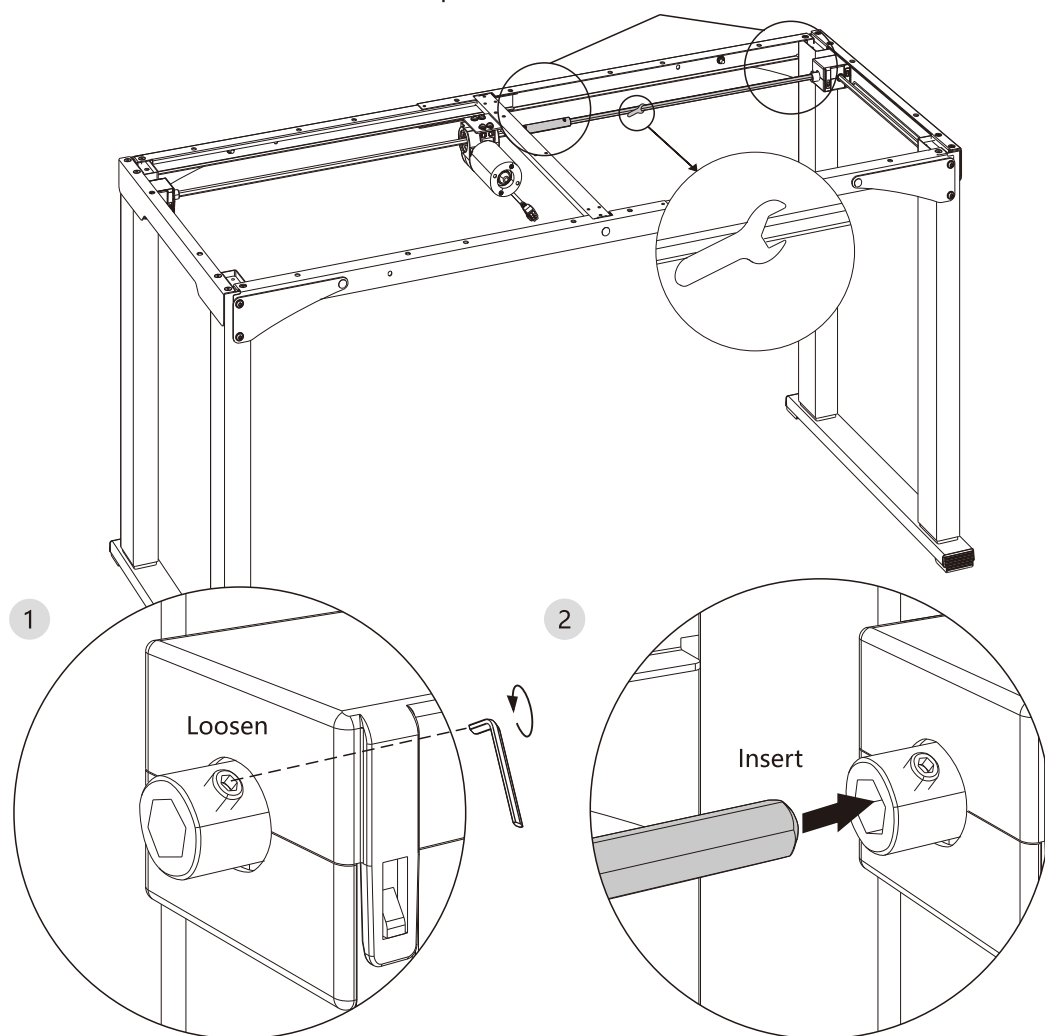
### Install drive rod (Coupling) onto the table frame



Note: The following steps are all for this procedure.

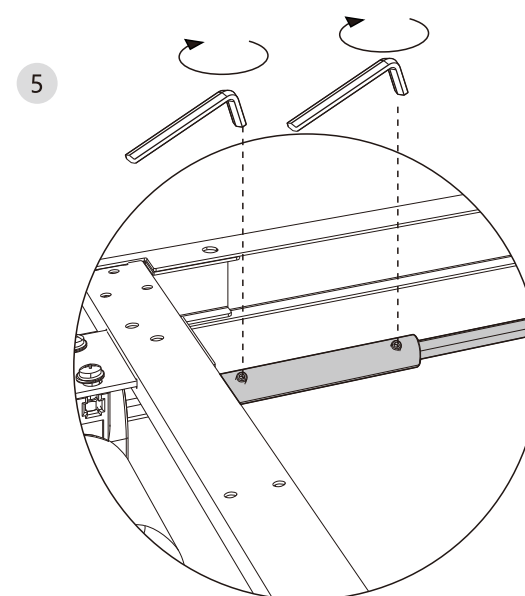
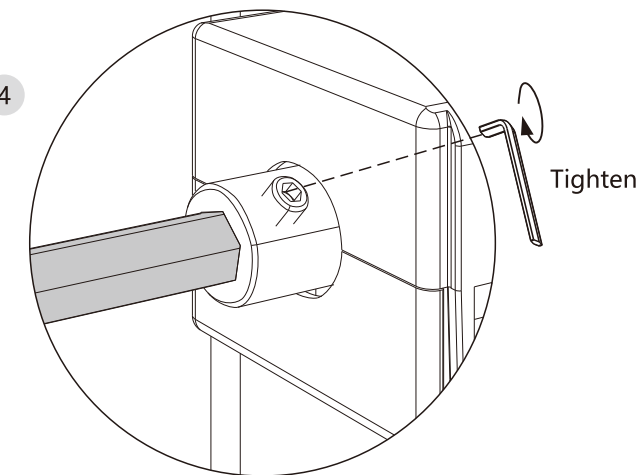
H x1

H x1  
2.5x2.5

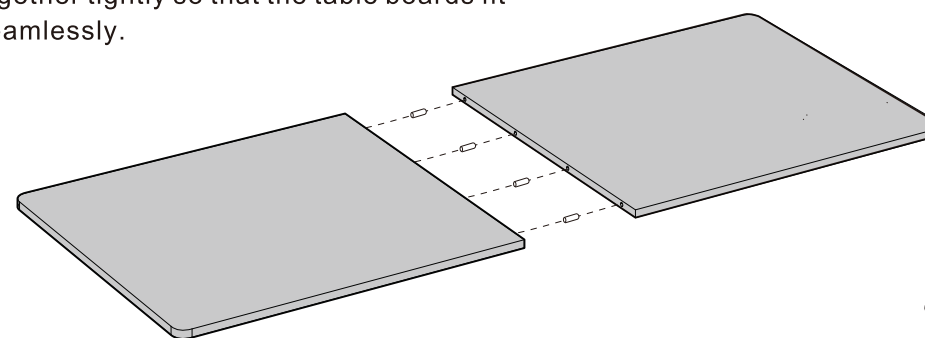


Note: The coupling should be positioned at the retaining ring.

The two end of the drive rod should be aligned horizontally. If not aligned, adjust the rod by rotating it with a wrench.

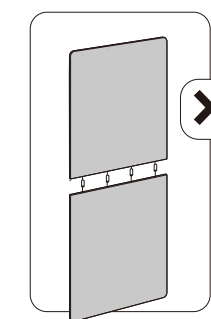


Note: The two table boards need to be pushed together tightly so that the table boards fit seamlessly.



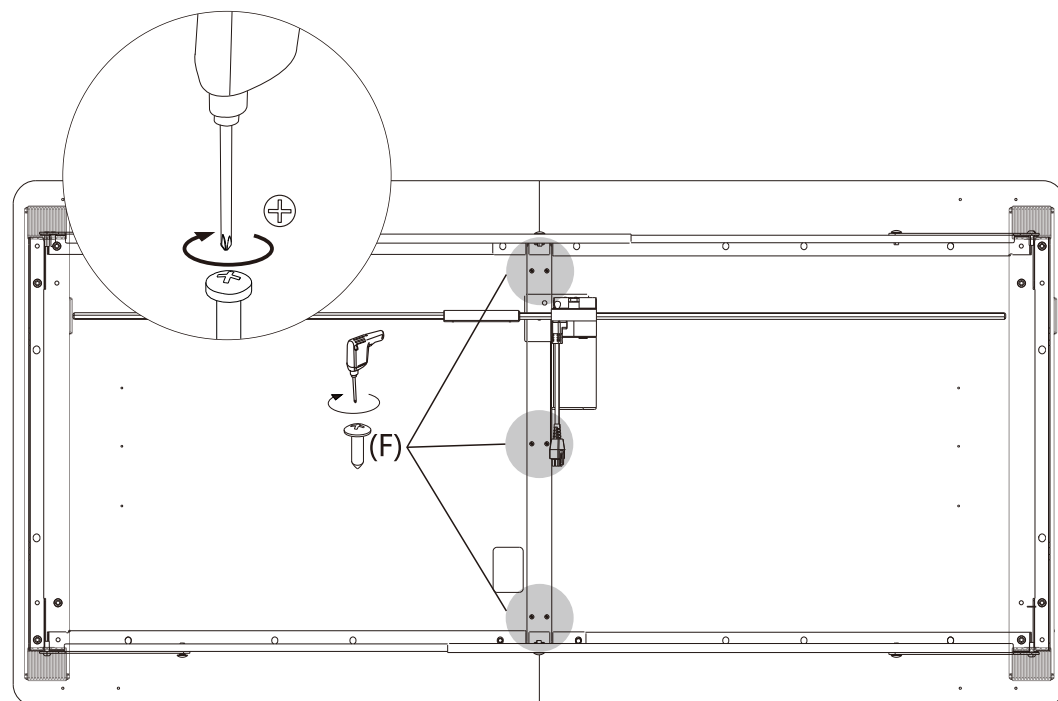
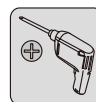
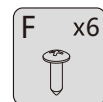
Recommended to install horizontally, not vertically.

E x4

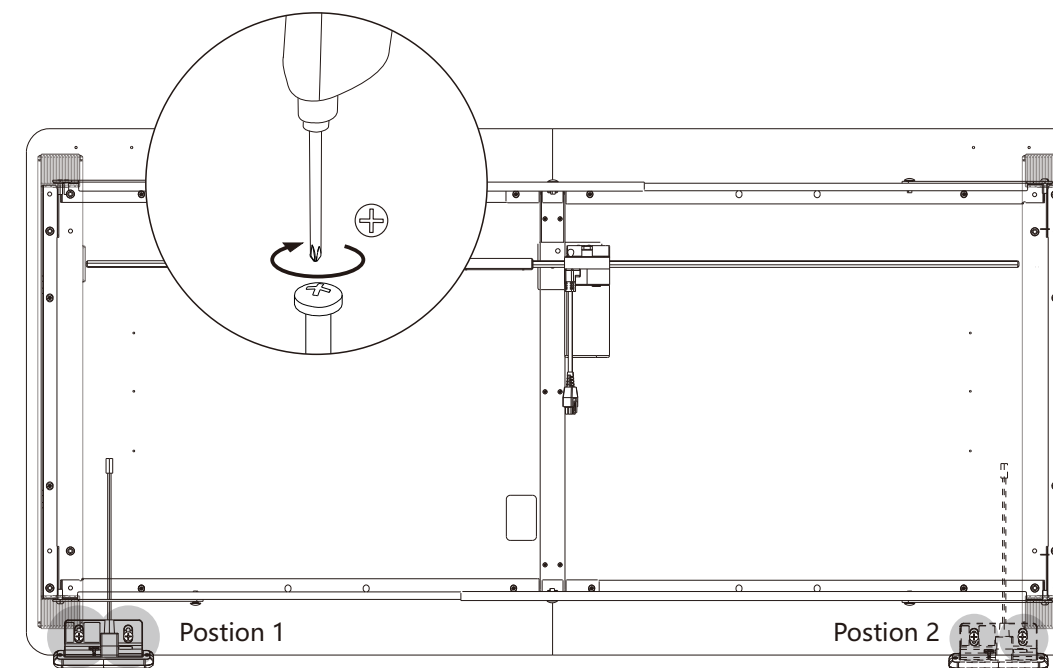
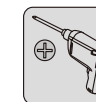


## 07 Install the tabletop

The sequence for screw installation is as follows: ●→■→▲



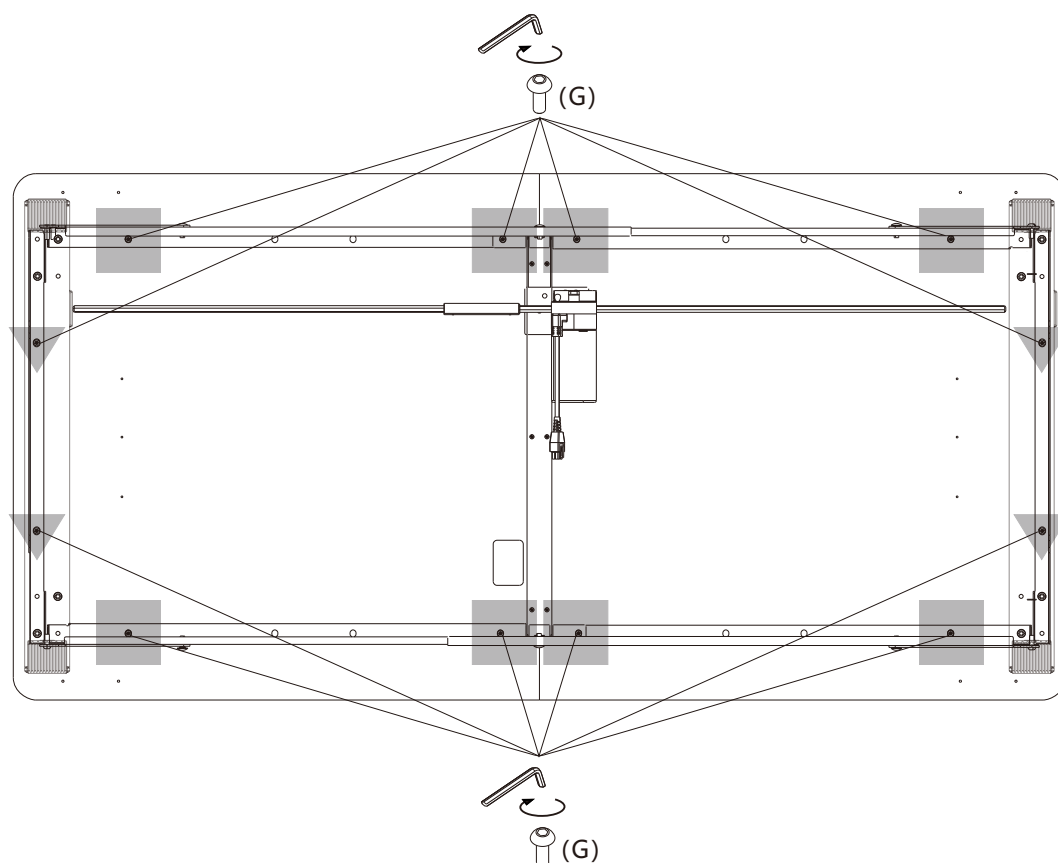
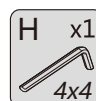
## 08 Install the keypad



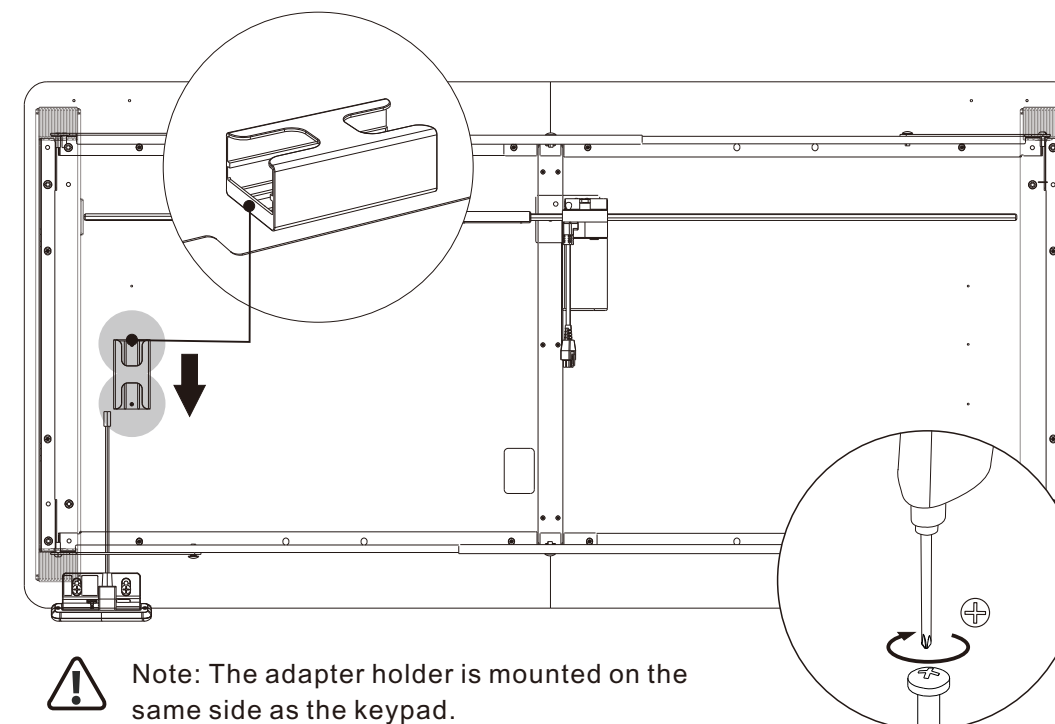
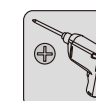
⚠ Note: Either installation location is allowed.

## 09 Secure the adapter mounting bracket

The sequence for screw installation is as follows: ●→■→▲

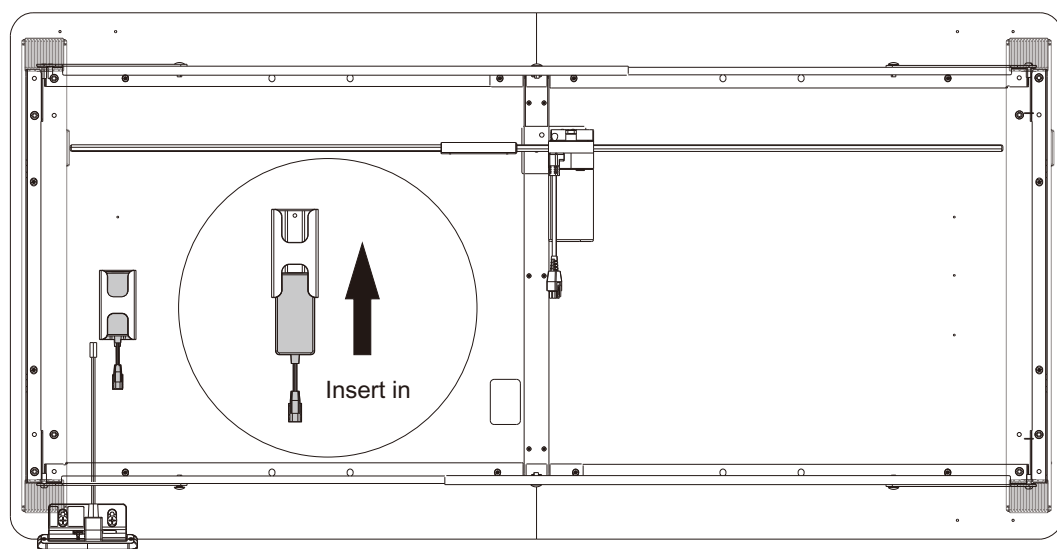


⚠ Pay attention to the mounting direction of the adapter holder.

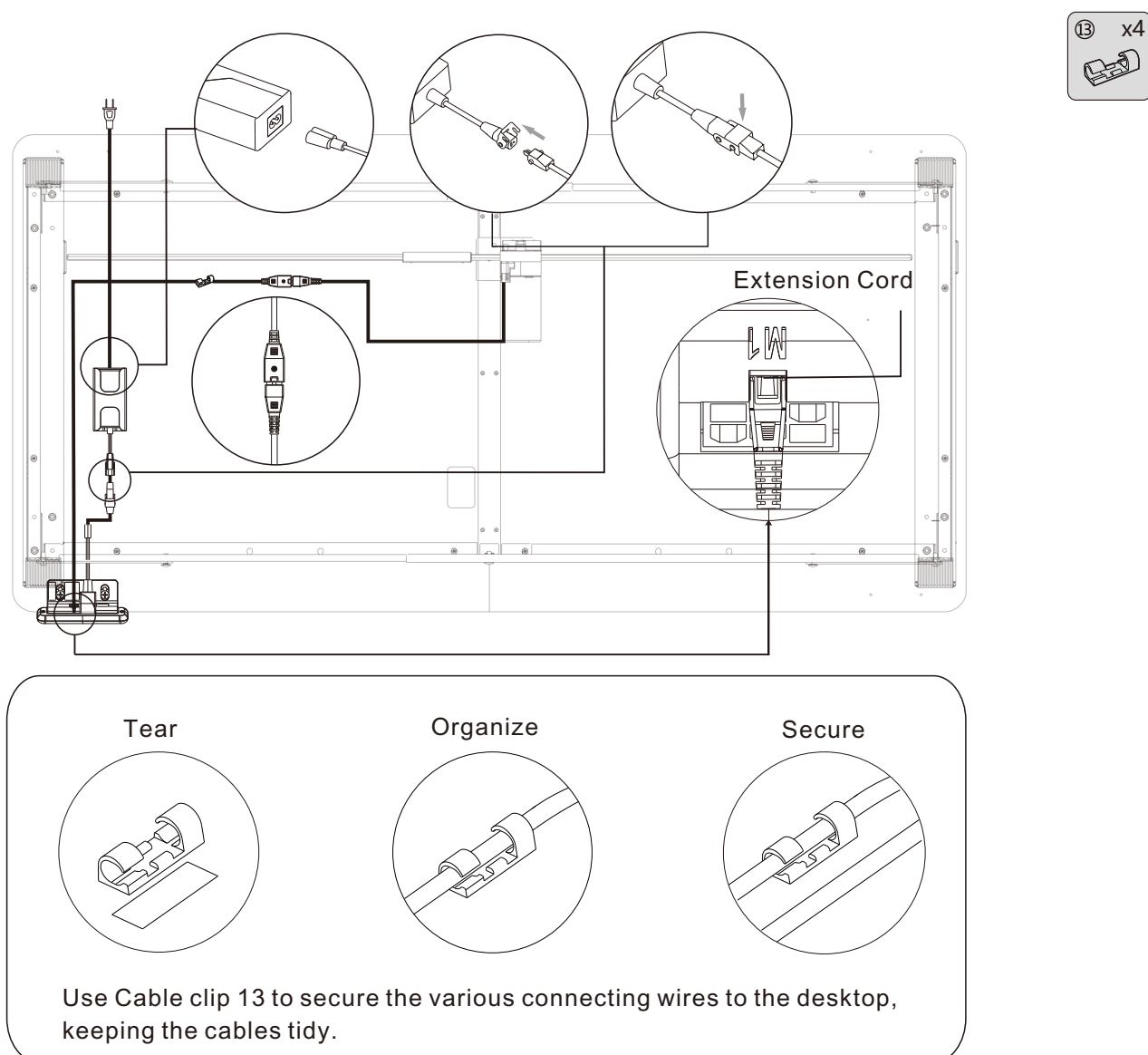


⚠ Note: The adapter holder is mounted on the same side as the keypad.


## 10 Install the adapter

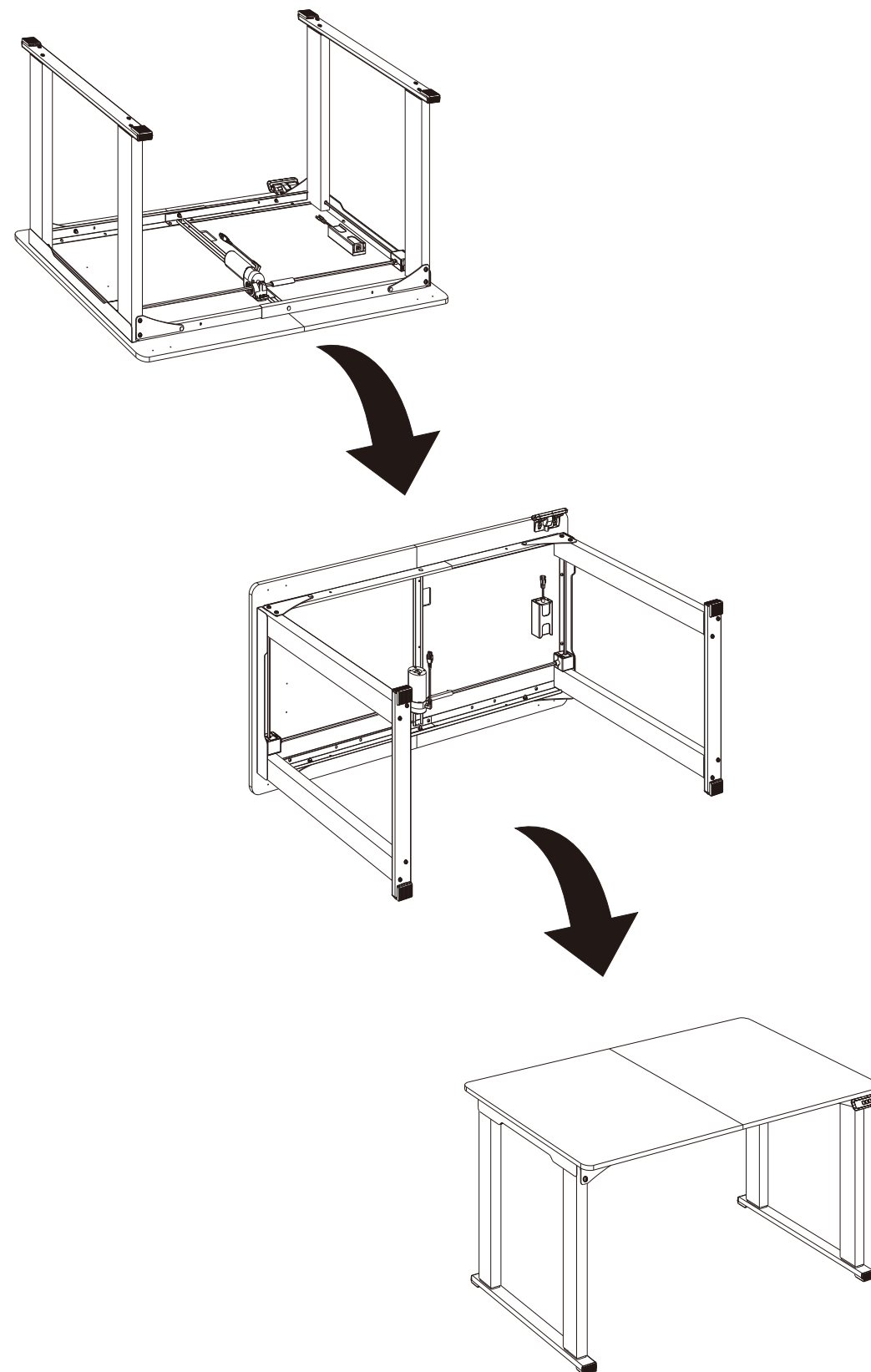


## 11 Connect the cables



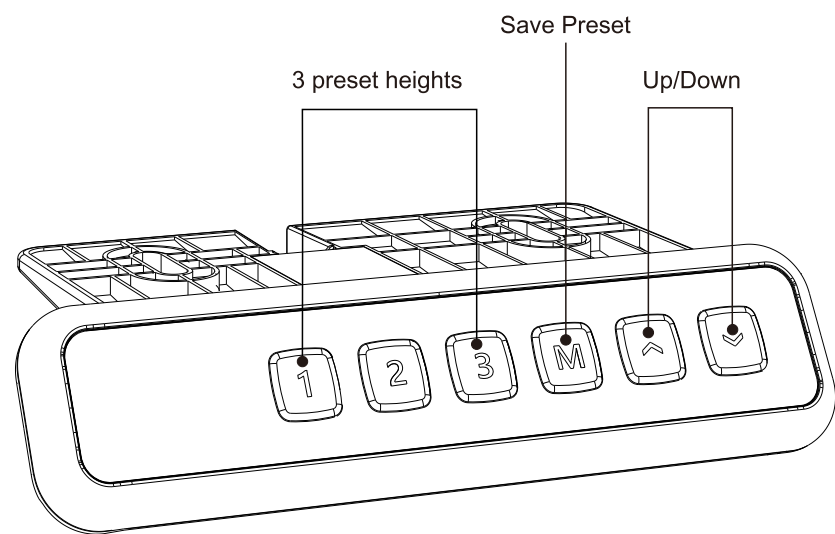
## 12 Flip the table

 Note: Flip the table over with the keypad side facing up to protect it from being squeezed.





# Keypad User Guide

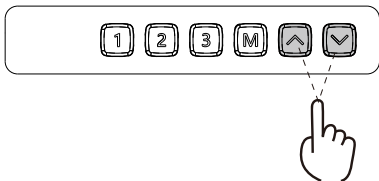


**Note**  
Ensure that there are no obstacles blocking the movement of the table during the lifting process and confirm that all cables are long enough for the table to move up and down.

### Introduction to the keys

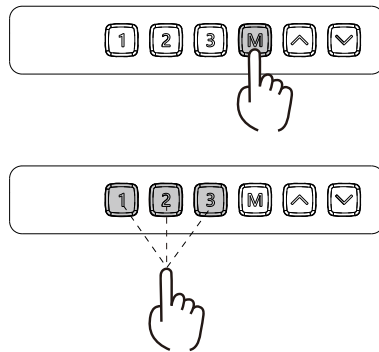
- a. A total of six keys, including "1", "2", "3", "M", "^" and "v"
- (a) "1": Position 1, which is the designated height saved by the user
- (b) "2": Position 2, which is the designated height saved by the user
- (c) "3": Position 3, which is the designated height saved by the user
- (d) "M": Save key for accessing the save height function
- (e) "^": Up key to control the table upwards.
- (f) "v": Down key to control the table downwards.

### ● Lifting function



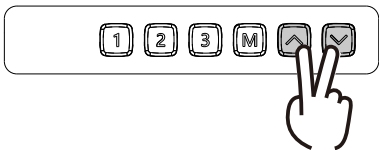
The height of the lift table can be adjusted upwards or downwards by pressing the "^" or "v" keys.

### ● Height Memory Function



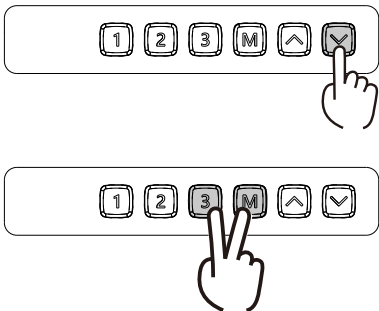
- a. Press and hold the "^" or "v" key to adjust the lifting table. Once you've reached the desired height, press the "M" key. The display will then show "5-". Next, press either the "1", "2", or "3" key to save the current height to the corresponding position. This will be displayed as "5-1", "5-2", or "5-3", respectively.
- b. When the table is at any height, long press the "1", "2", or "3" key to adjust the lift table to the previously saved specified height position.

### ● Anti-collision function



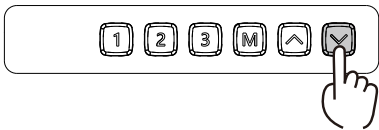
- a. When the function is activated, if the lifting table encounters an obstruction and triggers this function, it will stop and then move back a certain distance.
- b. Long press both the "^" key and the "v" key simultaneously for 3 seconds to switch on or switch off the anti-collision function.  
If the display shows "A-1", the anti-collision function is switched on.  
If the display shows "A-0", the anti-collision function is switched off.

### ● Reset Function



- a. Way ①: Long press the "v" key until the desk reaches the lowest position, then release the key. Afterward, long press the "v" key for 3 seconds; the display will show "r5t". Continue holding the "v" key until the display shows the current height. Release the "v" key to complete the reset process.  
Way ②: Long press both the "M" key and the "3" key simultaneously for 3 seconds. When the LED display shows "r5t", release the keys. This indicates the device has entered the reset state. Then, long press the "v" key until the display shows the current height. Release the "v" key to complete the reset process.
- b. If the lifting system malfunctions, press and hold the "v" key until the lifting table reaches its lowest position, then release the key. Next, long-press the "v" key until the display indicates the current height, then release the key to complete the reset.

### ● Error Handling




- a. If "E01" or "E02" appears, please allow the table to rest for more than 18 minutes, then it can be used normally.
- b. If other error codes appear and long pressing the "v" key does not elicit a response, please ensure that the connecting wire is intact and properly connected. If the wire is intact and connected correctly, power off the table for more than 10 seconds, then reconnect the power. The display will show "r5t", and long press the "v" key to initiate the reset process.
- c. If the table still fails to operate normally after performing the above steps, please contact customer service.

# Resolving Common Issues

This list is used for checking and solving common faults and errors. Please contact the manufacturer if problem you encounter is not on the list below.

Fault phenomenon	Method
Electronic functions are not functioning properly	Check whether the cable connection is normal;
Rising at a low speed	Check if overloaded, max loading: 100 kg;
Downward sliding	
Frequently Reposition	
Only down but not up or only up but not down	Reset;
Not enough up&down height	
The bottom cannot rise	
Overwork (Duty cycle: Max2min on/18min OFF)	Restart after suspend for 18mins while connecting with power;
Press the button and the desk goes up instead of down	Check for obstructions underneath the table or any wire harnesses hanging down.

# Attention

1. Power supply: AC100V - 240V, frequency 50/60HZ;
2. Working environment: 0 - 40°C;
3. Before cleaning, you have to unplug the power supply cable. Clean with a slightly damp cloth to wipe away the surface dust. Keep all electrical components away from liquids. Do not damage the connection line and keep the plug in a safe position.
4. Examine the appliance frequently for signs of wear or damage. If there are such signs or if the appliance has been misused or does not work, contact the supplier for further information.
5. Inside the control box, there are electronic components, metal parts, plastic parts, wires and so on. They should be disposed in accordance with the local laws and regulations. They cannot be disposed as household waste.
6. Before using the product, please make sure the product has been installed correctly.
7. When operating a switch that initiates and maintains the movement of the furniture or terminates the movement of the furniture or causes a change of the direction of the movement of the furniture, make sure that other persons are kept away.
8. Placement of furniture to avoid creating entrapment hazards with other furniture.
9. Before starting use of the product, please read the instructions to fully understand all the product's functions and settings.
10. Keep children away from electric height-adjustable desks, control units and handsets. Manufacturer is not responsible of any damages that result from children's unpredictable behaviour.
11. Slight noise caused by the multi wedge belt or brake system will not impact the use of this product.
12. Do not use corrosive or abrasive materials to clean this product and please dispose of cleaning solutions in an environmentally friendly manner.
13. Understand the risks associated with using this product. Children or those with cognitive impairment should not use this product without supervision.
14. If the power supply cord is damaged or broken, it must be replaced by the manufacturer or a relevant specialist to avoid any injuries.
15. Please operate in a clean and safe environment. For example, do not left around your tools. And always be careful to deal with packaging materials, in order to avoid any kinds of possible danger. Potential chocking risk exists when children play with plastic bags!
16. The appliance is only to be used with the unit provided
17. For indoor use only. 
18. If necessary, retain the original package for future transportation.

# Recycling and Disposal

This product cannot be disposed of as household waste. To prevent damage to the environment, this product should be recycled. Please use the relevant recycling systems available to you or contract the distributor or manufacturer for recycling assistance.